

# WANDSWORTH ARTS FOR EVERYONE



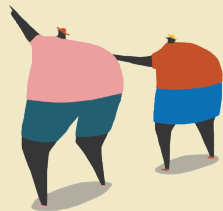


1. ALRA
2. ArtLacuna
3. The Baked Bean Company
4. Battersea Arts Centre
5. Battersea Barge
6. The Village Hall at Battersea Power Station
7. bbodance
8. Tavaziva Dance
9. Caius House
10. Chocolate Films
11. Katherine Low Settlement
12. National Opera Studio
13. Oily Cart
14. Providence House Youth Club
15. Pump House Gallery
16. Putney Arts Theatre
17. Putney School of Art and Design
18. R.O.S.E. Community Clubroom

19. Royal Academy of Dance
20. Royal College of Art
21. Sprout Arts
22. Tara Theatre
23. The Bedford Pub
24. The Cat's Back
25. Theatre503
26. Work and Play Scrapstore
27. World Heart Beat Music Academy
28. The Antique Breadboard Museum
29. The Magic Garden Pub
30. Battersea Park Library
31. Battersea Library
32. Balham Library
33. Earlsfield Library
34. Northcote Library
35. Putney Library
36. Roehampton Library
37. Southfields Library
38. Tooting Library

39. York Gardens Library and Community Centre
40. Wandsworth Town Library
41. Putney - Odeon Luxe
42. Cineworld Wandsworth
43. The Half Moon
44. University of Roehampton
45. Battersea Park Children's Zoo
46. Le QuecumBar
47. Polka Theatre
48. Omnibus Theatre
49. Black Heroes Soul Food Café
50. South Thames College

# WANDSWORTH ARTS FOR EVERYONE



## MAP & GUIDE

Welcome to Wandsworth! You might not know just how much is on offer in this amazing borough. We've got theatre, art, music, dance, cinema, libraries, museums, archives, community centres... the list goes on... There's something for everyone, for every age, from world class venues to hidden local gems, almost every day of the week all year round, right on your doorstep.

We've created a limited edition Arts & Culture map for our local residents and visitors. It shines a light on 50 venues all over Wandsworth that offer a wide range of arts, entertainment and activities, as well as places for learning and participation. As this map is a pilot, we know we haven't included everything on offer, but we hope this is just the start of something special we can share year on year.

This map has been brought to you by What Next? Wandsworth. We are an open voluntary group for residents, arts and community organisations, business people and individuals who want to champion the contribution that the arts and culture make in our community, part of the What Next? national movement. Find out more at [www.whatnextculture.co.uk](http://www.whatnextculture.co.uk) and follow us on Twitter @WNWandsworth.

We are very aware that some venues and other organisations aren't completely accessible to everyone. However where "other inclusive access" is indicated, these venues do offer, as much as is possible, something extra – whether it's Pay What You Can/Free performances, Parent and Baby or Relaxed events. Find out more on each venue's website.

\*The details included are as accurate as possible at the time of going to print – we advise you to call or check the venue website ahead of your visit.



1. **ALRA**  
An international awarding organisation, delivering a world-renowned training and qualification programme for students and teachers. They are an inclusive, innovative, member driven organisation which aims to inspire participation and excellence through the education, training and promotion of dance. [bbo.dance](http://bbo.dance) • 020 8748 1241

2. **ArtLacuna**  
ArtLacuna is an artist-led space that accommodates artist studios, a residency and research programme, project and exhibition space. It strives to open up a dialogue across creative disciplines, be a resource for professionals and students and provide opportunities for the local community. [artlacuna.org](http://artlacuna.org) • 078 4532 8125 • **Wheelchair access**
3. **The Baked Bean Company**  
The Baked Bean Company provide outstanding services for people with learning disabilities. They teach drama, dance, singing, DJing and more. They write and perform original pieces of theatre at local theatres in Wandsworth. [bakedbeancompany.com](http://bakedbeancompany.com) • 020 8944 0024 • **Wheelchair access** • **All our performances are Relaxed**

4. **Battersea Arts Centre**  
BAC is an arts centre open all day for anyone to explore, with a mission to inspire people to take creative risks. Come to be creative, see a show, explore local heritage, visit the Scratch Bar, play or relax. [bac.org.uk](http://bac.org.uk) • 020 7223 2223 • **Wheelchair access** • **Concession tickets for disabled people, inc. free tickets for carers** • **BSL Interpreted Performances** • **Induction Loop** • **Captioned** • **Performances** • **Audio Described Performances** • **Relaxed Performances** • **Service Dogs welcome**
5. **Battersea Barge**  
An award-winning, unique venue moored on the Thames. Re-opening in mid-October 2018, it's the perfect venue – with a bar and restaurant, a stage with lights and sound, licensed for weddings and ideal for parties and shows of all kinds. [ahoy@batterseabarge.com](mailto:ahoy@batterseabarge.com) • 020 7582 1066
6. **The Village Hall at Battersea Power Station**  
This multi-use space located in a railway arch next to the iconic Battersea Power Station has a 150-seat main hall with theatre, comedy and family events, plus a smaller studio space and mezzanine level. Available to hire privately. [batterseapowerstation.co.uk/events](http://batterseapowerstation.co.uk/events) • **Partial wheelchair access** • **Free, lunchtime concerts at the Studio** • **BSL Interpreted Performances**

7. **bbodance**  
An international awarding organisation, delivering a world-renowned training and qualification programme for students and teachers. They are an inclusive, innovative, member driven organisation which aims to inspire participation and excellence through the education, training and promotion of dance. [bbo.dance](http://bbo.dance) • 020 8748 1241
8. **Tavaziva Dance**  
Tavaziva is a dance school led by Zimbabwean-born Bawren Tavaziva. His unique style is a choreographic synthesis of ballet, contemporary and African dance. They make new commissions, tour, run a dance apprenticeship programme and deliver training for young men and schools. [tavazivadance.com](http://tavazivadance.com) • 020 8237 7010
9. **Caius House**  
With a team of experienced youth workers, educators, musicians, counsellors, trained dancers and media specialists, the Caius House team supports individuals and provides targeted programmes to encourage young people to develop their individual skills and talents. [caiushouse.org](http://caiushouse.org) • 020 3818 6210 • **Wheelchair access** •
10. **Chocolate Films**  
Chocolate Films is a video production company that specialises in making documentaries and video content for businesses, charities, public sector bodies and cultural organisations. They have an outreach programme which helps over 2000 young people each year in film-making activities. [chocolatevideoproduction.co.uk](http://chocolatevideoproduction.co.uk) • 020 7793 4287
11. **Katherine Low Settlement**  
KLS is a busy local charity, based on Battersea High Street since 1924. Over 500 people come every week for arts, culture, educational, health and celebratory activities. They run their own community projects and have affordable loan hire. [klssettlement.org.uk](http://klssettlement.org.uk) • 0207 223 2845 • **Partial wheelchair access** • **'60 plus' drama club and sewing group** • **Free chair-based exercise and chair-based dance classes**
12. **National Opera Studio**  
In partnership with the UK's six main opera companies, they train talented young opera singers and répétiteurs to become the leading artists of their generation. They offer free lunchtime concerts, rehearsal spaces to hire and short courses for aspiring singers. [nationaloperastudio.org.uk](http://nationaloperastudio.org.uk) • 020 88748811 • **Wheelchair access** • **Free, lunchtime concerts at the Studio** • **BSL Interpreted Performances**
13. **Oily Cart**  
Oily Cart create innovative, multi-sensory and highly interactive

productions for early years audiences aged 0-6, and for young people aged 3-19 with profound and multiple learning disabilities, who are on the autism spectrum, and/or who are deafblind. They run training courses on their unique approach for students and theatre professionals. [oilycart.org.uk](http://oilycart.org.uk) • 020 8672 6329 • **Wheelchair access**

14. **Providence House Youth Club**  
The Youth Club provides social, recreational, sporting and educational activities in a weekly programme and during school holidays for young people aged 5-25 years. A key goal is to provide a sense of community and identity for each young person. [providence-house.org](http://providence-house.org) • 020 7228 0433
15. **Pump House Gallery**  
Pump House Gallery provides a welcoming space to see, experience, and participate in contemporary art. Each exhibition in its year-round programme is accompanied by an InHouse Project, which provides fun, thought-provoking and creative ways for visitors of all ages to explore the exhibition. [pumphousegallery.org.uk](http://pumphousegallery.org.uk) • 020 3959 0021 • **Wheelchair access ground floor**

16. **Putney Arts Theatre**  
Putney Arts Theatre is an inclusive performance venue, providing creative & supportive theatrical opportunities for young people and adults and an inspiring space for its resident companies: Group 64 Theatre for Young People and Putney Theatre Company. [putneyartstheatre.org.uk](http://putneyartstheatre.org.uk) • 020 8788 6943 • **Wheelchair access** • **Free tickets for carers**
17. **Putney School of Art and Design**  
Putney School of Art & Design has been in Oxford Road, Putney since 1895. They offer art and design courses (including painting, drawing, photography) as well as more specialised courses. There are courses for beginners, young people and family learning. [enablelc.org](http://enablelc.org) • 0203 959 0110 • **Wheelchair access**

18. **R.O.S.E. Community Clubroom**  
R.O.S.E. Community Clubroom is a community centre located on the Savona Estate, near Battersea Park. It is available for hire for private parties and functions. [wandsworthfringe.com/venue-list/rose-community-clubroom](http://wandsworthfringe.com/venue-list/rose-community-clubroom) • 07789944508 • **Wheelchair access**
19. **Royal Academy of Dance**  
The Royal Academy of Dance counts over 250,000 students taking RAD ballet exams across the globe. It offers classes in many dance styles for both children and adults, workshops and summer schools – for all ages – full of creativity, fun and fitness.

20. **Royal College of Art**  
The Battersea Campus of the RCA (the leading university for art and design in the world) houses programmes including Painting, Photography, Jewellery, Ceramics and Glass, as well as hosting research and business start-up space. Free public events are also offered. [rca.ac.uk](http://rca.ac.uk) • 020 7590 4444 • **Wheelchair access**
21. **Sprout Arts**  
Sprout Arts is a not-for-profit community arts venue run and managed by volunteers. A place where artists, designers, makers and performers can exhibit their work, share their skills and engage with the local community to broaden creative opportunities for everyone. [sproutarts.com](http://sproutarts.com) • **Partial wheelchair access**
22. **Tara Theatre**  
Home to a world of stories, Tara Theatre's 100 plush seats surround an earth floor for actors to weave their magic on. Its Studio offers opportunities for intimate rehearsals, small events and meetings, plus an outdoor patio walled by railway sleepers. [tara-arts.com](http://tara-arts.com) • 020 8333 4457 • **Wheelchair access** • **Audio Described, British Sign Language, Captioning** • **BSL Interpreted Performances** • **Captioned Performances** • **Audio Described Performances** • **Touch Tours**

23. **The Bedford Pub**  
A huge converted Victorian hotel, The Bedford is now a cornerstone for London's live music, comedy and entertainment scenes. There's lots for families to enjoy with half-term dance workshops and raves for children and adults by Big Fish Little Fish. [thebedford.com](http://thebedford.com) • 0208 682 8940
24. **The Cat's Back**  
A small community pub in Putney approximately 111 paces from the river. They have an open fire in winter and a verdant beer terrace in summer. The function room often doubles as a theatre space and music venue. [thecatsback.com](http://thecatsback.com) • 0208617344 • **Partial wheelchair access**

25. **Theatre503**  
The home of new writers and artists who bring their words to life. They stage over 100 emerging writers a year from shorts to Olivier Award winning productions. West End quality at affordable prices, right on your doorstep. [theatre503.com](http://theatre503.com) • 020 978 7040 • **Relaxed Performances** • **Access Concessions inc. free tickets for carers** • **Service Dogs welcome** • **Residents rates and Pay What You Can**

26. **Work and Play Scrapstore**  
Scrapstore rescue surplus and waste from donor businesses across London for the local community - schools, students, community groups, charities, families, therapists, artists - to use. They offer workshops on-site and elsewhere and offer free arts activities on Hazelhurst Estate. [workandplayscrapstore.org.uk](http://workandplayscrapstore.org.uk) • 020 86824216 • **Wheelchair access**
27. **World Heart Beat Music Academy**  
The World Heart Beat Music Academy is a specialist world music academy for young people in London, which not only brings and teaches music from all over the world but also provides disadvantaged youth with instruments and tuition. [worldheartbeat.org/about](http://worldheartbeat.org/about) • 020 8870 3042
28. **The Antique Breadboard Museum**  
A micro museum displaying 100+ breadboards and wooden table accessories from the 1800s to the present. Enjoy a hands-on experience with personalised tour and cream tea presented on your favourite! [antiquebreadboards.com](http://antiquebreadboards.com) • 020 8785 2464 • **Partial wheelchair access**

29. **The Magic Garden Pub**  
Located in the heart of South West London, right by Battersea Park, The Magic Garden is a community of festival-goers, foodies, DJs and musicians who want to give you the best of what the international music scene has to offer. [magicgardenpub.com](http://magicgardenpub.com) • 0207 622 4844
30. **Battersea Park Library**  
Battersea Park Library offers a variety of events, sessions and classes for adults and children, giving you the perfect opportunity to meet people or learn something new. Reading Groups, Story Time, English Conversation Group, Chess Club and lots more. [better.org.uk/library/london/wandsworth/battersea-park-library](http://better.org.uk/library/london/wandsworth/battersea-park-library) • 020 7720 4122 • **Wheelchair access and other access needs provided**

31. **Battersea Library**  
Situated on Lavender Hill, Battersea library has a wide range of books, newspapers and magazines, computers, free WiFi, and study space. Events include Reading Groups, Baby Rhyme Time, Story Time, IT Skills and Chess Club. [better.org.uk/library/london/wandsworth/battersea-library](http://better.org.uk/library/london/wandsworth/battersea-library) • 020 7223 2334 • **Wheelchair access and other access needs provided**
32. **Balham Library**  
Balham Library, is conveniently situated in the middle of Balham, just off Balham High Road. A great library with a wide range of services including a Creative Writing Group and

33. **Earlsfield Library**  
Earlsfield Library stocks a wide range of books ranging from fact to fiction as well as a collection of reference materials. There is a hall for hire and exhibition space, a Reminiscence Group and a Teen Reading Group. [better.org.uk/library/london/wandsworth/earlsfield-library](http://better.org.uk/library/london/wandsworth/earlsfield-library) • 020 89462088 • **Wheelchair access** • **Wheelchair access and other access needs provided**
34. **Northcote Library**  
Situating on Northcote Road, the Library has lots on offer, from a wide range of books, and various activities for adults and children including Story Time, Ballet Babes and Baby Rhyme Time. [better.org.uk/library/london/wandsworth/northcote-library](http://better.org.uk/library/london/wandsworth/northcote-library) • 020 7223 2336 • **Wheelchair access and other access needs provided**

35. **Putney Library**  
Putney Library has free internet access, WiFi, adult and children's sections, study rooms, CDs and DVDs. There is also a hall for hire. Groups and activities include a Spanish English Exchange and Knit and Knatter. [better.org.uk/library/london/wandsworth/putney-library](http://better.org.uk/library/london/wandsworth/putney-library) • 020 8780 3085 • **Wheelchair access and other access needs provided**
36. **Roehampton Library**  
Roehampton Library stocks a wide range of books ranging from fact to fiction as well as a selection of children's books. There is free Internet access. They run regular ESOL classes, plus Baby Rhyme Time and Knit and Knatter. [better.org.uk/library/london/wandsworth/roehampton-library](http://better.org.uk/library/london/wandsworth/roehampton-library) • 020 8246 6979 • **Wheelchair access and other access needs provided**

37. **Southfields Library**  
Southfields Library stocks a wide range of adult and children's books. There is also free Internet access and a hall for hire. There is a reading group for the over sixties and activities for children including Baby Rhyme Time. [better.org.uk/library/london/wandsworth/southfields-library](http://better.org.uk/library/london/wandsworth/southfields-library) • 020 8780 1945 • **Wheelchair access and other access needs provided**
38. **Tooting Library**  
Located on Mitcham Road Tooting Library offers books, DVDs, and comfy chairs to relax and read the newspaper and well as computer use and free WiFi. Activities include a Chess Club, Scrabble Club and English Conversation Group. [better.org.uk/library/london/wandsworth/tooting-library](http://better.org.uk/library/london/wandsworth/tooting-library) • 020 8767 0543 • **Wheelchair access and other access needs provided**

39. **York Gardens Library and Community Centre**  
This community project is far more than just a library. It acts as a community centre and has a number of rooms for hire. Primarily a children's library with a small collection of books for adults and public access to computers. [better.org.uk/library/london/wandsworth/york-gardens-library](http://better.org.uk/library/london/wandsworth/york-gardens-library) • 020 7223 2341 • **Wheelchair access and other access needs provided**
40. **Wandsworth Town Library**  
Wandsworth Town Library stocks a wide range of adult and children's books. There is also free Internet access and WiFi. Activities include English for Beginners, a Silver Circle Reading Group, English Writing Group and Story Time. [better.org.uk/library/london/wandsworth/wandsworth-town-library](http://better.org.uk/library/london/wandsworth/wandsworth-town-library) • 020 8877 1742 • **Wheelchair access and other access needs provided**

41. **Putney - Odeon Luxe**  
Putney Odeon Luxe is a new luxury cinema, where every seat reclines so you can relax and recline during your film. With less seats and extra space, you'll have a more personal, immersive experience with every visit. [odeon.co.uk/cinemas/putney-119](http://odeon.co.uk/cinemas/putney-119) • **Wheelchair access Screen 2** • **Audio Description** • **CEA Card** • **Free ticket for carers**

42. **Cineworld Wandsworth**  
Cineworld Wandsworth is a 14 screen cinema with London's first 4DX, and a new Superscreen. Located in the Southside Shopping Centre, it is served by a multi-storey car park, and a variety of restaurants and bars. [cineworld.co.uk/cinemas/london-wandsworth#/summary](http://cineworld.co.uk/cinemas/london-wandsworth#/summary) • **Wheelchair access** • **Autism friendly screening** • **Service Dogs welcome** • **Subtitled** • **Audio description**

43. **The Half Moon**  
Situating near the banks of the Thames at Putney Bridge, The Half Moon has been entertaining patrons with the very best in live music for decades. They have a thriving programme of bands, DJ's, acoustic music, comedy and other live entertainment. [halfmoon.co.uk](http://halfmoon.co.uk) • 020 8780 9383 • **Wheelchair access** •

44. **University of Roehampton**  
The University of Roehampton's Department of Dance is rated number 1 for research in the UK. The Department for Dance, Drama and Performance is renowned for its cutting edge performance practice and critical theory. [roehampton.ac.uk](http://roehampton.ac.uk) • 020 8392 3000 • **Wheelchair access**

45. **Battersea Park Children's Zoo**  
A magical place especially designed for children in mind in the heart of Battersea Park. Watch animals up close and explore the amazing adventure playground with large sandpit, diggers, fort, trampolines, life size tractor and fire engine. [batterseaparkzoo.co.uk/](http://batterseaparkzoo.co.uk/) • 0207 924 5826 • **Wheelchair access**

46. **Le QuecumBar**  
Located in the heart of Battersea, Le QuecumBar is London's premier Gypsy Swing venue serving music, mood, wine and food, six nights a week. Enjoy the enchanting atmosphere, live performances or drop by for the weekly unplugged jam sessions. [quecumbar.co.uk](http://quecumbar.co.uk) • 020 7787 2227

47. **Polka Theatre**  
Polka is one of the few theatres in the UK dedicated exclusively to children. Based in Wimbledon since 1979, Polka creates world-class theatre to entertain and inspire young audiences. They run a range

48. **Omnibus Theatre**  
Omnibus is a multi-award winning independent theatre, presenting a vibrant artistic programme in the heart of South West London. They have a 90-seat studio theatre, a café/bar and two performance and rehearsal spaces. [omnibus-clapham.org](http://omnibus-clapham.org) • 020 7498 4699 • **Wheelchair access** • **Multi-sensory workshops**
49. **Black Heroes Soul Food Café**  
The Black Heroes Soul Food Café™ providesa creative space for inclusive artistic expression celebrating Black Heroes and exploring the historical and contemporary presence of Black Britons in Wandsworth. 7.30pm, last Thursday of every month at the Leilani Restaurant and Ashanti Lounge. [blackheroesfoundation.org](http://blackheroesfoundation.org) • 07986 745486
50. **South Thames College**  
Across their four locations South Thames College provide a range of classes, workshops and courses from tasters to Diploma levels in Art, Fashion and Graphic Design, Film and Multi-Media, Dance, Music Production and Performing Arts. Check the website for details at each venue. [south-thames.ac.uk](http://south-thames.ac.uk) • 020 8918 7777 • **Wheelchair access**

51. **Putney - Odeon Luxe**  
Putney Odeon Luxe is a new luxury cinema, where every seat reclines so you can relax and recline during your film. With less seats and extra space, you'll have a more personal, immersive experience with every visit. [odeon.co.uk/cinemas/putney-119](http://odeon.co.uk/cinemas/putney-119) • **Wheelchair access Screen 2** • **Audio Description** • **CEA Card** • **Free ticket for carers**
52. **Cineworld Wandsworth**  
Cineworld Wandsworth is a 14 screen cinema with London's first 4DX, and a new Superscreen. Located in the Southside Shopping Centre, it is served by a multi-storey car park, and a variety of restaurants and bars. [cineworld.co.uk/cinemas/london-wandsworth#/summary](http://cineworld.co.uk/cinemas/london-wandsworth#/summary) • **Wheelchair access** • **Autism friendly screening** • **Service Dogs welcome** • **Subtitled** • **Audio description**

53. **The Half Moon**  
Situating near the banks of the Thames at Putney Bridge, The Half Moon has been entertaining patrons with the very best in live music for decades. They have a thriving programme of bands, DJ's, acoustic music, comedy and other live entertainment. [halfmoon.co.uk](http://halfmoon.co.uk) • 020 8780 9383 • **Wheelchair access** •
54. **University of Roehampton**  
The University of Roehampton's Department of Dance is rated number 1 for research in the UK. The Department for Dance, Drama and Performance is renowned for its cutting edge performance practice and critical theory. [roehampton.ac.uk](http://roehampton.ac.uk) • 020 8392 3000 • **Wheelchair access**

55. **Battersea Park Children's Zoo**  
A magical place especially designed for children in mind in the heart of Battersea Park. Watch animals up close and explore the amazing adventure playground with large sandpit, diggers, fort, trampolines, life size tractor and fire engine. [batterseaparkzoo.co.uk/](http://batterseaparkzoo.co.uk/) • 0207 924 5826 • **Wheelchair access**
56. **Le QuecumBar**  
Located in the heart of Battersea, Le QuecumBar is London's premier Gypsy Swing venue serving music, mood, wine and food, six nights a week. Enjoy the enchanting atmosphere, live performances or drop by for the weekly unplugged jam sessions. [quecumbar.co.uk](http://quecumbar.co.uk) • 020 7787 2227
57. **Polka Theatre**  
Polka is one of the few theatres in the UK dedicated exclusively to children. Based in Wimbledon since 1979, Polka creates world-class theatre to entertain and inspire young audiences. They run a range

58. **Omnibus Theatre**  
Omnibus is a multi-award winning independent theatre, presenting a vibrant artistic programme in the heart of South West London. They have a 90-seat studio theatre, a café/bar and two performance and rehearsal spaces. [omnibus-clapham.org](http://omnibus-clapham.org) • 020 7498 4699 • **Wheelchair access** • **Multi-sensory workshops**
59. **Black Heroes Soul Food Café**  
The Black Heroes Soul Food Café™ providesa creative space for inclusive artistic expression celebrating Black Heroes and exploring the historical and contemporary presence of Black Britons in Wandsworth. 7.30pm, last Thursday of every month at the Leilani Restaurant and Ashanti Lounge. [blackheroesfoundation.org](http://blackheroesfoundation.org) • 07986 745486
60. **South Thames College**  
Across their four locations South Thames College provide a range of classes, workshops and courses from tasters to Diploma levels in Art, Fashion and Graphic Design, Film and Multi-Media, Dance, Music Production and Performing Arts. Check the website for details at each venue. [south-thames.ac.uk](http://south-thames.ac.uk) • 020 8918 7777 • **Wheelchair access**

61. **Putney - Odeon Luxe**  
Putney Odeon Luxe is a new luxury cinema, where every seat reclines so you can relax and recline during your film. With less seats and extra space, you'll have a more personal, immersive experience with every visit. [odeon.co.uk/cinemas/putney-119](http://odeon.co.uk/cinemas/putney-119) • **Wheelchair access Screen 2** • **Audio Description** • **CEA Card** • **Free ticket for carers**
62. **Cineworld Wandsworth**  
Cineworld Wandsworth is a 14 screen cinema with London's first 4DX, and a new Superscreen. Located in the Southside Shopping Centre, it is served by a multi-storey car park, and a variety of restaurants and bars. [cineworld.co.uk/cinemas/london-wandsworth#/summary](http://cineworld.co.uk/cinemas/london-wandsworth#/summary) • **Wheelchair access** • **Autism friendly screening** • **Service Dogs welcome** • **Subtitled** • **Audio description**

63. **The Half Moon**  
Situating near the banks of the Thames at Putney Bridge, The Half Moon has been entertaining patrons with the very best in live music for decades. They have a thriving programme of bands, DJ's, acoustic music, comedy and other live entertainment. [halfmoon.co.uk](http://halfmoon.co.uk) • 020 8780 9383 • **Wheelchair access** •
64. **University of Roehampton**  
The University of Roehampton's Department of Dance is rated number 1 for research in the UK. The Department for Dance, Drama and Performance is renowned for its cutting edge performance practice and critical theory. [roehampton.ac.uk](http://roehampton.ac.uk) • 020 8392 3000 • **Wheelchair access**

65. **Battersea Park Children's Zoo**  
A magical place especially designed for children in mind in the heart of Battersea Park. Watch animals up close and explore the amazing adventure playground with large sandpit, diggers, fort, trampolines, life size tractor and fire engine. [batterseaparkzoo.co.uk/](http://batterseaparkzoo.co.uk/) • 0207 924 5826 • **Wheelchair access**

66. **Le QuecumBar**  
Located in the heart of Battersea, Le QuecumBar is London's premier Gypsy Swing venue serving music, mood, wine and food, six nights a week. Enjoy the enchanting atmosphere, live performances or drop by for the weekly unplugged jam sessions. [quecumbar.co.uk](http://quecumbar.co.uk) • 020 7787 2227

67. **Polka Theatre**  
Polka is one of the few theatres in the UK dedicated exclusively to children. Based in Wimbledon since 1979, Polka creates world-class theatre to entertain and inspire young audiences. They run a range

68. **Omnibus Theatre**  
Omnibus is a multi-award winning independent theatre, presenting a vibrant artistic programme in the heart of South West London. They have a 90-seat studio theatre, a café/bar and two performance and rehearsal spaces. [omnibus-clapham.org](http://omnibus-clapham.org) • 020 7498 4699 • **Wheelchair access** • **Multi-sensory workshops**

69. **Black Heroes Soul Food Café**  
The Black Heroes Soul Food Café™ providesa creative space for inclusive artistic expression celebrating Black Heroes and exploring the historical and contemporary presence of Black Britons in Wandsworth. 7.30pm, last Thursday of every month at the Leilani Restaurant and Ashanti Lounge. [blackheroesfoundation.org](http://blackheroesfoundation.org) • 07986 745486

70. **South Thames College**  
Across their four locations South Thames College provide a range of classes, workshops and courses from tasters to Diploma levels in Art, Fashion and Graphic Design, Film and Multi-Media, Dance, Music Production and Performing Arts. Check the website for details at each venue. [south-thames.ac.uk](http://south-thames.ac.uk) • 020 8918 7777 • **Wheelchair access**

71. **Putney - Odeon Luxe**  
Putney Odeon Luxe is a new luxury cinema, where every seat reclines so you can relax and recline during your film. With less seats and extra space, you'll have a more personal, immersive experience with every visit. [odeon.co.uk/cinemas/putney-119](http://odeon.co.uk/cinemas/putney-119) • **Wheelchair access Screen 2** • **Audio Description** • **CEA Card** • **Free ticket for carers**

72. **Cineworld Wandsworth**  
Cineworld Wandsworth is a 14 screen cinema with London's first 4DX, and a new Superscreen. Located in the Southside Shopping Centre, it is served by a multi-storey car park, and a variety of restaurants and bars. [cineworld.co.uk/cinemas/london-wandsworth#/summary](http://cineworld.co.uk/cinemas/london-wandsworth#/summary) • **Wheelchair access** • **Autism friendly screening** • **Service Dogs welcome** • **Subtitled** • **Audio description**

73. **The Half Moon**  
Situating near the banks of the Thames at Putney Bridge, The Half Moon has been entertaining patrons with the very best in live music for decades. They have a thriving programme of bands, DJ's, acoustic music, comedy and other live entertainment. [halfmoon.co.uk](http://halfmoon.co.uk) • 020 8780 9383 • **Wheelchair access** •

74. **University of Roehampton**  
The University of Roehampton's Department of Dance is rated number 1 for research in the UK. The Department for Dance, Drama and Performance is renowned for its cutting edge performance practice and critical theory. [roehampton.ac.uk](http://roehampton.ac.uk) • 020 8392 3000 • **Wheelchair access**

75. **Battersea Park Children's Zoo**  
A magical place especially designed for children in mind in the heart of Battersea Park. Watch animals up close and explore the amazing adventure playground with large sandpit, diggers, fort, trampolines, life size tractor and fire engine. [batterseaparkzoo.co.uk/](http://batterseaparkzoo.co.uk/) • 0207 924 5826 • **Wheelchair access**

76. **Le QuecumBar**  
Located in the heart of Battersea, Le QuecumBar is London's premier Gypsy Swing venue serving music, mood, wine and food, six nights a week. Enjoy the enchanting atmosphere, live performances or drop by for the weekly unplugged jam sessions. [quecumbar.co.uk](http://quecumbar.co.uk) • 020 7787 2227

77. **Polka Theatre**  
Polka is one of the few theatres in the UK dedicated exclusively to children. Based in Wimbledon since 1979, Polka creates world-class theatre to entertain and inspire young audiences. They run a range

78. **Omnibus Theatre**  
Omnibus is a multi-award winning independent theatre, presenting a vibrant artistic programme in the heart of South West London. They have a 90-seat studio theatre, a café/bar and two performance and rehearsal spaces. [omnibus-clapham.org](http://omnibus-clapham.org) • 020 7498 4699 • **Wheelchair access** • **Multi-sensory workshops**